

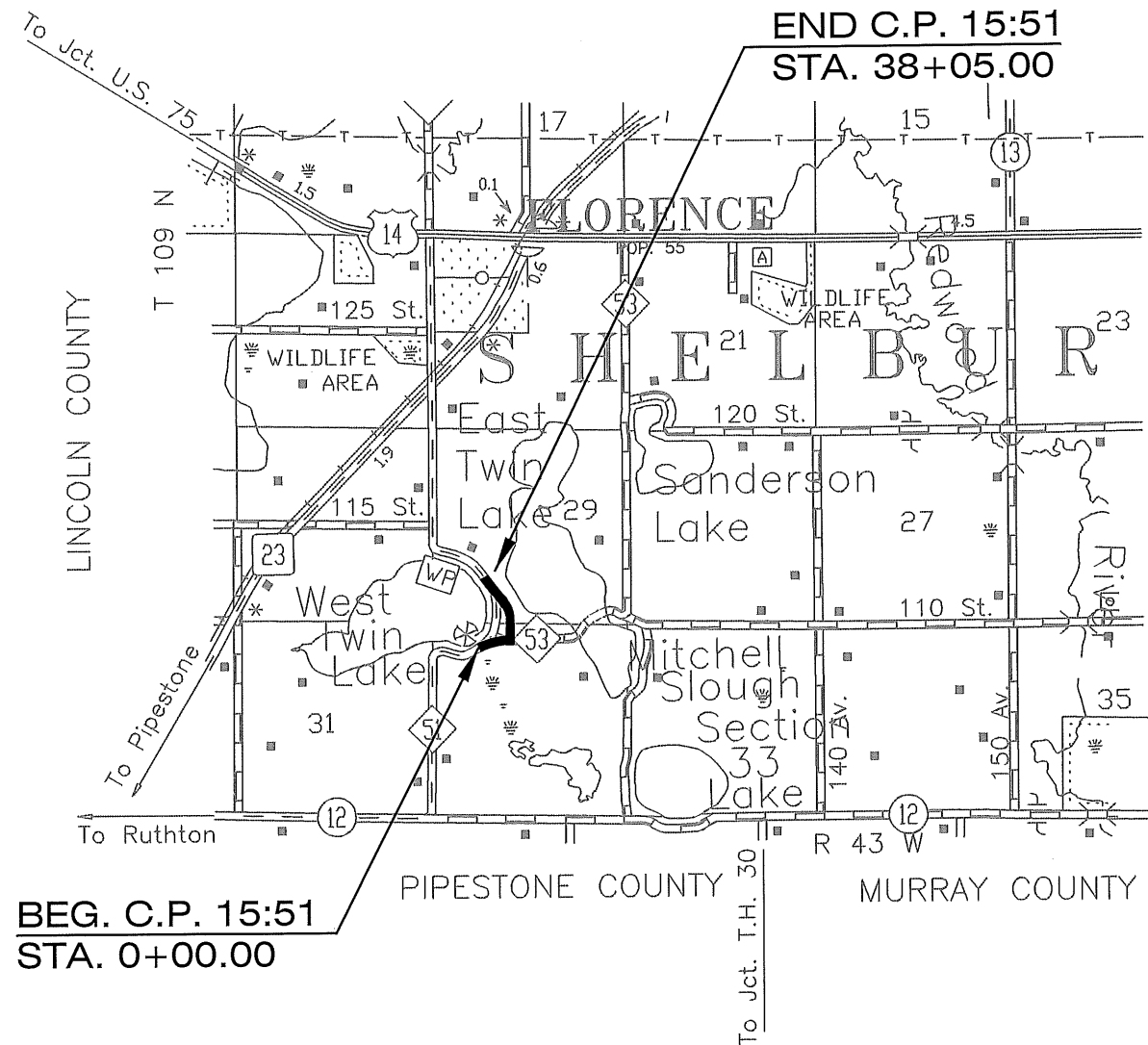
MINNESOTA DEPARTMENT OF TRANSPORTATION LYON COUNTY

CONSTRUCTION PLAN FOR: BITUMINOUS PAVING, AGG. SHOULDERING, AND PAVEMENT MARKINGS

LOCATED ON: C.R. 51 BETWEEN: C.S.A.H. 12 (County Line) AND T.H. 23

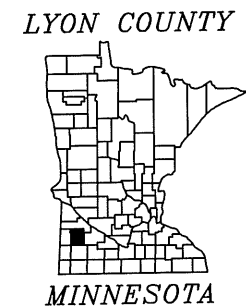
LYON COUNTY PROJECT NO. : 15:51

GROSS LENGTH: 3805.00 FEET 0.721 MILES
 BRIDGES-LENGTH: FEET MILES
 EXCEPTIONS-LENGTH: FEET MILES
 NET LENGTH: 3805.00 FEET 0.721 MILES



BEG. C.P. 15:51
STA. 0+00.00

END C.P. 15:51
STA. 38+05.00



LYON COUNTY PROJECT NO. 15:51

SHEET NO. 1 OF 3 SHEETS

PLAN SYMBOLS

STATE LINE	----
COUNTY LINE	-----
TOWNSHIP OR RANGE LINE	-----
SECTION LINE	-----
QUARTER LINE	-----
SIXTEENTH LINE	-----
RIGHT OF WAY LINE	-----
SLOPE EASEMENT	-----
PRESENT RIGHT OF WAY LINE	-----
CONTROL OF ACCESS LINE	-----
PROPERTY LINES	-----
VACATED PLATTED PROPERTY	-----

CORPORATE HIGHWAY CENTER LINE	=====
TRUNK HIGHWAY CENTER LINE	=====
RETAINING WALL	=====
RAILROAD	=====
RAILROAD RIGHT OF WAY LINE	=====
RIVER OR CREEK	=====
DRY RUN	=====
DRAINAGE DITCH	=====
DRAIN TILE	=====
CULVERT	=====
DROP INLET	=====
GUARD RAIL	=====
BARBED WIRE FENCE	=====
WOVEN WIRE FENCE	=====
CHAIN LINK FENCE	=====
RAILROAD SNOW FENCE	=====
STONE WALL OR FENCE	=====
HEDGE	=====

RAILROAD CROSSING SIGN	-----
RAILROAD CROSSING BELL	-----
ELECTRIC WARNING SIGN	-----
CROSSING GATE	-----
MEANDER CORNER	-----
SPRINGS	-----
MARSH	-----

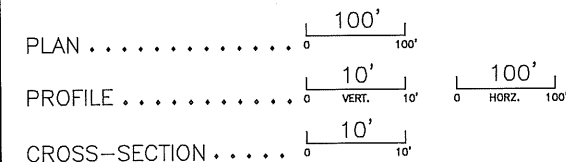
TIMBER	-----
ORCHARD	-----
BRUSH	-----
NURSERY	-----
CATCH BASIN	-----
FIRE HYDRANT	-----
CATTLE GUARD	-----
OVERPASS (HIGHWAY OVER)	-----
UNDERPASS (HIGHWAY UNDER)	-----
BRIDGE	-----

BUILDING (ONE STORY FRAME)	-----
F - FRAME	-----
S - STONE	-----
B - BRICK	-----
C - CONCRETE	-----
T - TILE	-----
ST - STUCCO	-----
IRON PIPE OR ROD	-----
MONUMENT (STONE, CONCRETE, OR METAL)	-----
WOODEN HUB	-----
GRAVEL PIT	-----
SAND PIT	-----
BORROW PIT	-----
ROCK QUARRY	-----

UTILITIES SYMBOLS

POWER POLE LINE	-----
TELEPHONE POLE LINE	-----
JOINT TELEPHONE AND POWER	-----
ON POWER POLES	-----
ON TELEPHONE POLES	-----
ANCHOR	-----
STEEL TOWER	-----
STREET LIGHT	-----
PEDESTAL	-----
GAS MAIN	-----
WATER MAIN	-----
CONDUIT	-----
TELEPHONE CABLE IN CONDUIT	-----
ELECTRIC CABLE IN CONDUIT	-----
TELEPHONE MANHOLE	-----
ELECTRIC MANHOLE	-----
BURIED TELEPHONE CABLE	-----
BURIED ELECTRIC CABLE	-----
AERIAL TELEPHONE CABLE	-----
SEWER (SANITARY OR STORM)	-----
SEWER MANHOLE	-----

SCALES



INDEX MAP N.T.S.

FED. PROJ. NO.

GOVERNING SPECIFICATIONS

THE 2014 EDITION OF THE MINNESOTA DEPARTMENT OF TRANSPORTATION
"STANDARD SPECIFICATION FOR CONSTRUCTION" SHALL GOVERN.

INDEX

SHEET NO. 1	TITLE SHEET
SHEET NO. 2	ESTIMATED QUANTITIES SHEETS
SHEET NO. 3	PLAN & PROFILE

THIS PLAN CONTAINS 3 SHEETS

DESIGN DESIGNATION

PROJ. SOIL FACTOR =	130%
ADT (CURRENT YEAR) 2014 =	57
ADT (FUTURE YEAR) 2034 =	68
R VALUE	10
ESALS (20 YEAR)	42,000
LESS THAN 150 =	10 TON
DESIGN LOADING =	4.0'
SHOULDER WIDTH:	

OR

FUNCTIONAL CLASSIFICATION: RURAL MINOR COLLECTOR
NO. OF TRAFFIC LANES: 2 NO. OF PARKING LANES: 0

DESIGN SPEED: 45 MPH

STA	TO STA	MPH
BASED ON STOPPING SIGHT DISTANCE:		
HEIGHT OF EYE: 3.5' HEIGHT OF OBJECT: 2.0'		
DESIGN SPEED NOT ACHIEVED AT:		
STA	TO STA	MPH

I HEREBY CERTIFY THAT THIS PLAN WAS PREPARED BY ME OR UNDER MY DIRECT SUPERVISION AND THAT I AM A DULY LICENSED PROFESSIONAL ENGINEER UNDER THE LAWS OF THE STATE OF MINNESOTA.

SIGNATURE: *Aaron VanMoer* TYPED OR PRINTED NAME: Aaron VanMoer
 APPROVED: LYON COUNTY ENGINEER

DATE: 3/23/15 LICENSE NUMBER: 50428

ESTIMATED QUANTITIES

NOTES	SPECIFICATIONS NUMBER	ITEM	UNIT	TOTAL ESTIMATED QUANTITIES
	2021 . 501	MOBILIZATION	LUMP SUM	1.00
	2051 . 501	MAINT & RESTORATION OF HAUL ROADS	LUMP SUM	1.00
	2112 . 501	SUBGRADE PREPARATION	ROAD STA	35.00
	2221 . 501	SHOULDER BASE AGGREGATE CLASS 5 MOD	TON	900.00
	2232 . 501	MILL BITUMINOUS SURFACE (1.5")	SQ YD	160.00
1	2360 . 501	TYPE SP12.5 WEARING COURSE MIX (3,C)	TON	2425.00
	2563 . 601	TRAFFIC CONTROL	LUMP SUM	1.00
	2582 . 502	24" STOP LINE WHITE - PAINT	LIN FT	24.00
2	2582 . 502	4" SOLID LINE YELLOW - PAINT	LIN FT	26,000.00
2	2582 . 502	6" SOLID LINE WHITE - PAINT	LIN FT	30,000.00

CONSTRUCTION NOTES (GENERAL):

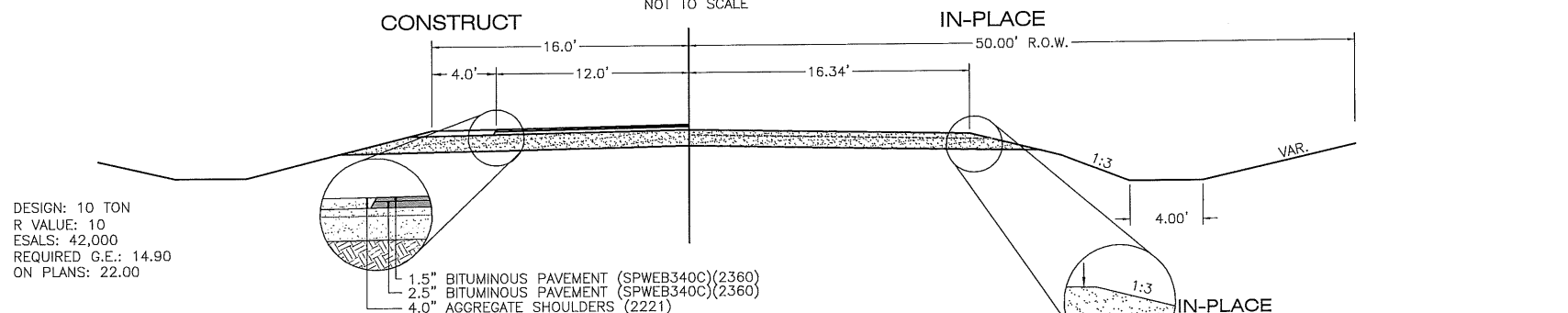
1. THE SUBSURFACE UTILITY INFORMATION IN THIS PLAN IS UTILITY QUALITY LEVEL "D". THIS QUALITY LEVEL WAS DETERMINED ACCORDING TO THE GUIDELINES CI/ASCE 38-2, ENTITLED "STANDARD GUIDELINES FOR THE COLLECTION AND DEPICTION OF EXISTING SUBSURFACE UTILITY DATA". NO COMPENSATION WILL BE MADE FOR ADDITIONAL COST INCURRED BY THE CONTRACTOR FOR ANY SPECIAL WORK OR SPECIAL CONSTRUCTION METHOD NECESSARY TO PROSECUTE WORK OVER, BELOW OR ADJACENT TO UTILITY PROPERTY WHOSE EXISTENCE WAS INDICATED ON THE PLANS OR SPECIAL PROVISIONS. IT SHALL BE THE CONTRACTORS RESPONSIBILITY TO CONTACT THE OWNERS OF ALL UTILITIES PRIOR TO AND DURING CONSTRUCTION SO THAT THE CONTRACTOR WILL BE INFORMED OF THE EXACT LOCATIONS OF ALL UTILITIES.
2. ALL CONSTRUCTION COVERED BY EASEMENT OR RIGHT OF WAY.

CONSTRUCTION NOTES (ITEM SPECIFIC):

1. 30' SAFETY EDGE SHALL BE INCLUDED. BITUMINOUS SAFETY EDGE SHALL EXTEND AT A 30° ANGLE FROM THE TOP OF EACH COURSE. BITUMINOUS TACK COAT SHALL BE INCLUDED IN THE TOTAL BID PRICE.
2. TOTAL QUANTITY IS FROM THE COUNTY ROAD 12 (SOUTH COUNTY LINE) TO US 23.

TYPICAL SECTION

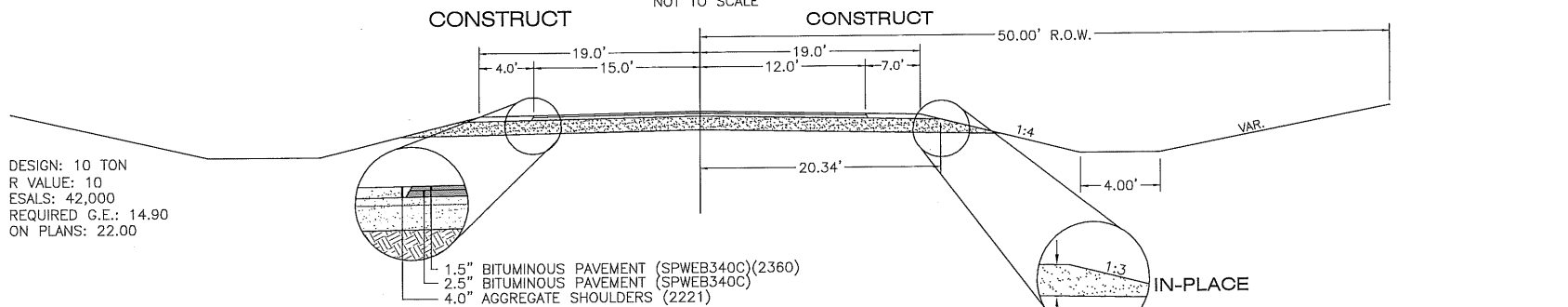
STA. 00+00.00 TO STA. 12+50.00
STA. 17+00.00 TO STA. 35+51.00
NOT TO SCALE



DESIGN: 10 TON
R VALUE: 10
ESALS: 42,000
REQUIRED G.E.: 14.90
ON PLANS: 22.00

TYPICAL SECTION

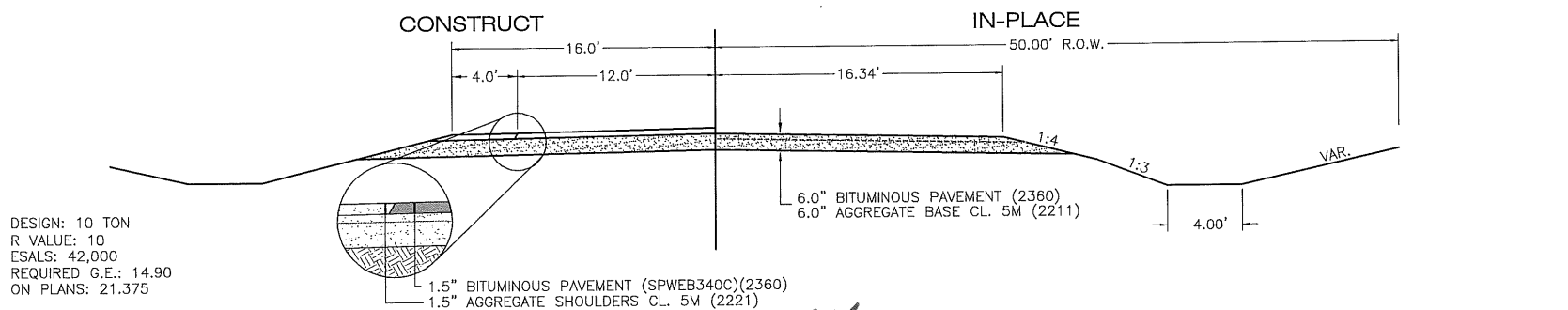
STA. 12+50.00 TO STA. 17+00.00
NOT TO SCALE



DESIGN: 10 TON
R VALUE: 10
ESALS: 42,000
REQUIRED G.E.: 14.90
ON PLANS: 22.00

TYPICAL SECTION

STA. 35+51.00 TO STA. 38+05.00
NOT TO SCALE



DESIGN: 10 TON
R VALUE: 10
ESALS: 42,000
REQUIRED G.E.: 14.90
ON PLANS: 21.375

UTILITIES

CODE	NAME	PHONE NUMBER
CONMIN04	FRONTIER COMMUNICATIONS	877.427.9130
LNPSTW01	LINCOLN-PIPESTONE WATER	507.368.4248
LYLNECO1	LYON LINCOLN ELECTRIC	507.247.5505
MCICOL01	MCI	800.289.3427
NOBCELO1	NOBLES COOP ELECTRIC	507.372.7331
WDSTEL01	WOODSTOCK TELEPHONE	800.778.9140
EXCELSO01	XCEL ENERGY	608.223.2014

UTILITIES VERIFIED WITH GOPHER STATE ONE CALL TICKET #140280153

STANDARD PLATES

THE FOLLOWING STANDARD PLATES, APPROVED BY THE FEDERAL HIGHWAY ADMINISTRATION, SHALL APPLY ON THIS PLAN.

PLATE NO.	DESCRIPTION
8000 I	STANDARD BARRICADES
9000 E	APPROACHES AND ENTRANCES

ALL APPROACHES ARE COVERED UNDER 9000D EXCEPT FIELD ENTRANCES WHICH ARE MODIFIED TO 24' TOP AND 6:1 SLOPES. (AS DIRECTED BY THE ENGINEER)

BASIS FOR ESTIMATED QUANTITIES

SHOULDER BASE AGGREGATE CL 5 MOD
SHOULDER BASE AGGREGATE CLASS 5M 140 LBS./CU.FT.

BITUMINOUS PAVEMENT
BITUMINOUS MATERIAL FOR MIXTURE (MAXIMUM DENSITY)
110LBS./SQ.YD./INCH OF DEPTH

CERTIFIED BY [Signature]
LICENSED PROFESSIONAL ENGINEER

LIC. NO. 50428 DATE 3/23/15

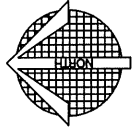
LYON COUNTY PROJECT 15:51

ESTIMATED QUANTITIES

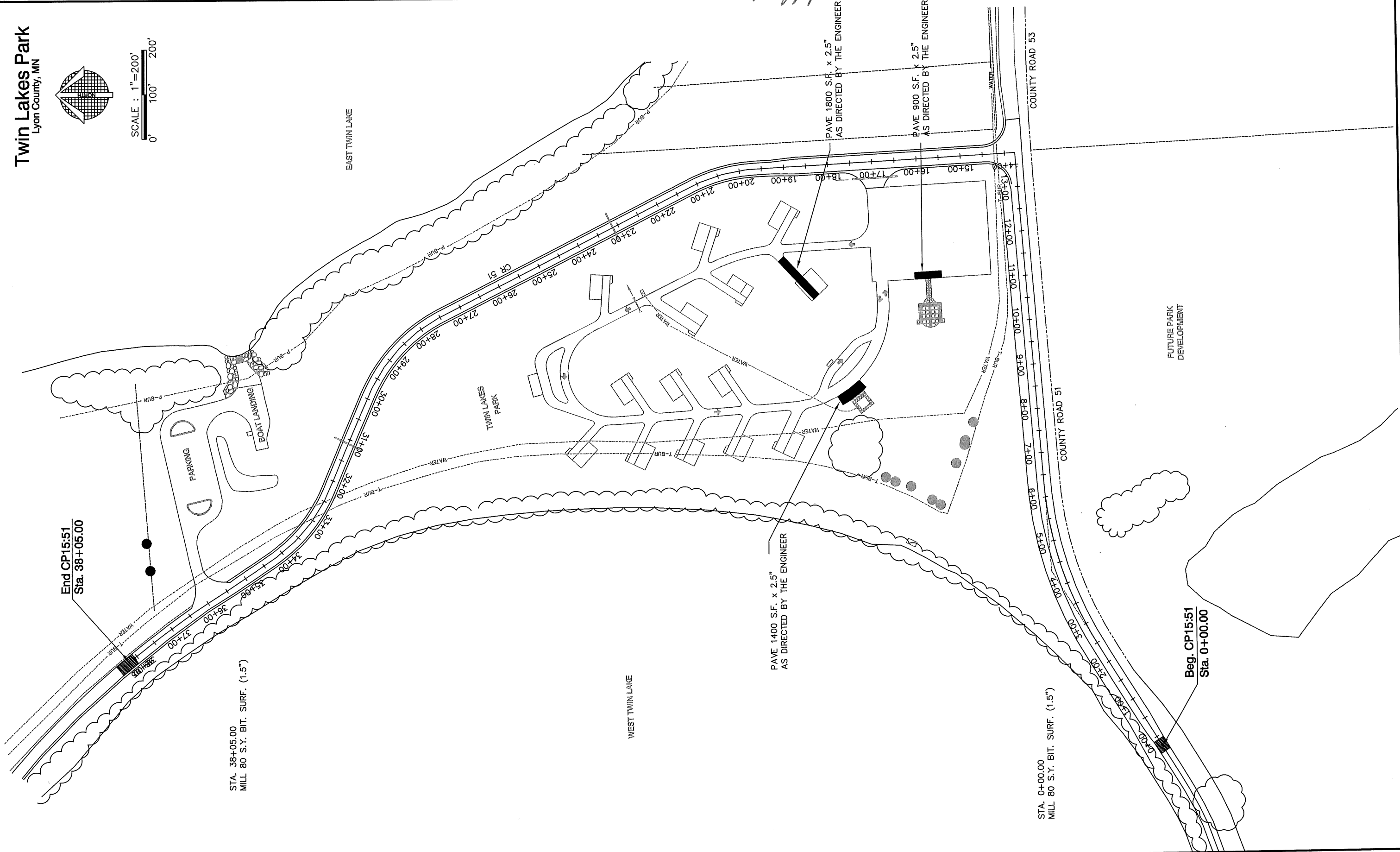
SHEET NO. 2 OF 3 SHEETS

Twin Lakes Park

Lyon County, MN



SCALE : 1"=200'
0' 100' 200'



End CP15:51
Sta. 38+05.00

STA. 38+05.00
MILL 80 S.Y. BIT. SURF. (1.5")

WEST TWIN LAKE

PAVE 1400 S.F. x 2.5"
AS DIRECTED BY THE ENGINEER

PAVE 1800 S.F. x 2.5"
AS DIRECTED BY THE ENGINEER

PAVE 900 S.F. x 2.5"
AS DIRECTED BY THE ENGINEER

STA. 0+00.00
MILL 80 S.Y. BIT. SURF. (1.5")

Beg. CP15:51
Sta. 0+00.00

FUTURE PARK
DEVELOPMENT

COUNTY ROAD 53

COUNTY ROAD 51