

PLAN SYMBOLS	
STATE LINE
COUNTY LINE
TOWNSHIP OR RANGE LINE
SECTION LINE
QUARTER LINE
SIXTEENTH LINE
RIGHT OF WAY LINE
SLOPE EASEMENT
PRESENT RIGHT OF WAY LINE
CONTROL OF ACCESS LINE
PROPERTY LINES
VACATED PLATTED PROPERTY
CORPORATE HIGHWAY CENTER LINE
TRUNK HIGHWAY CENTER LINE
RETAINING WALL
RAILROAD
RAILROAD RIGHT OF WAY LINE
RIVER OR CREEK
DRY RUN
DRAINAGE DITCH
DRAIN TILE
CULVERT
DROP INLET
GUARD RAIL
BARBED WIRE FENCE
WOVEN WIRE FENCE
CHAIN LINK FENCE
RAILROAD SNOW FENCE
STONE WALL OR FENCE
HEDGE
RAILROAD CROSSING SIGN
RAILROAD CROSSING BELL
ELECTRIC WARNING SIGN
CROSSING GATE
MEANDER CORNER
SPRINGS
MARSH
TIMBER
ORCHARD
BRUSH
NURSERY
CATCH BASIN
FIRE HYDRANT
CATTLE GUARD
OVERPASS (HIGHWAY OVER)
UNDERPASS (HIGHWAY UNDER)
BRIDGE
BUILDING (ONE STORY FRAME)
F - FRAME	C - CONCRETE
S - STONE	T - TILE
B - BRICK	ST - STUCCO
IRON PIPE OR ROD
MONUMENT (STONE, CONCRETE, OR METAL)
WOODEN HUB
GRAVEL PIT
SAND PIT
BORROW PIT
ROCK QUARRY
UTILITIES SYMBOLS	
POWER POLE LINE
TELEPHONE POLE LINE
JOINT TELEPHONE AND POWER ON POWER POLES
ON TELEPHONE POLES
ANCHOR
STEEL TOWER
STREET LIGHT
PEDESTAL
GAS MAIN
WATER MAIN
CONDUIT
TELEPHONE CABLE IN CONDUIT
ELECTRIC CABLE IN CONDUIT
TELEPHONE MANHOLE
ELECTRIC MANHOLE
BURIED TELEPHONE CABLE	T-BUR
BURIED ELECTRIC CABLE	P-BUR
AERIAL TELEPHONE CABLE	T-AE
SEWER (SANITARY OR STORM)
SEWER MANHOLE

SCALES	
PLAN	0 100' 100'
PROFILE	0 10' VERT. 10' 0 100' HORZ.
CROSS-SECTION	0 10' 10'
INDEX MAP N.T.S.

MINNESOTA DEPARTMENT OF TRANSPORTATION

LYON COUNTY

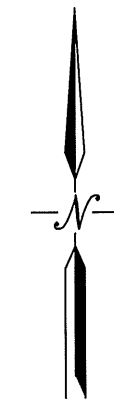
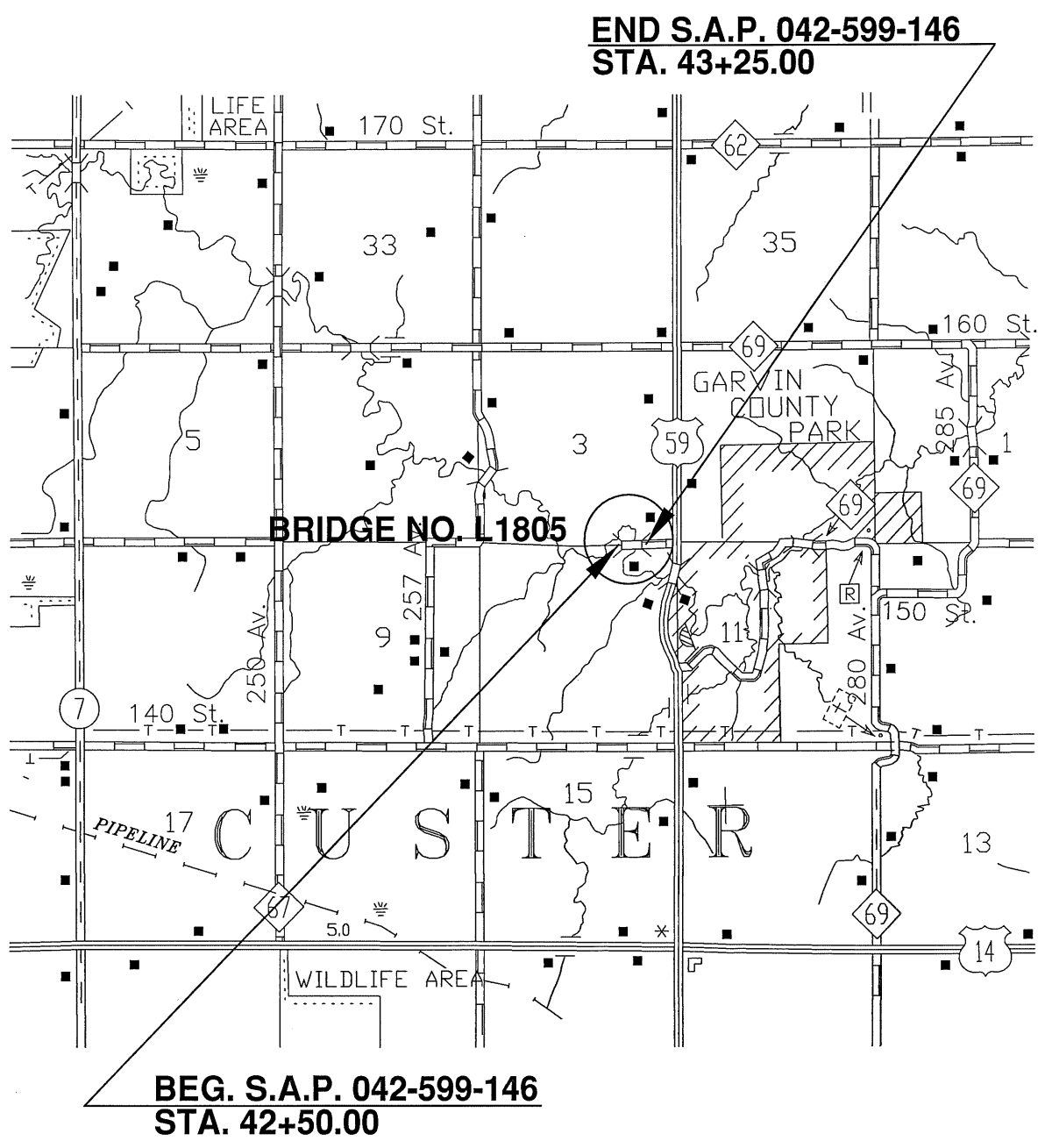
CONSTRUCTION PLAN FOR: BRIDGE REMOVAL

LOCATED ON: 150th St. BETWEEN: 260th Ave. AND: U.S. 59 (3.75 MILES NORTH OF GARVIN)
 (Geographical Description)

FROM: A PT. 1100.00 FT. WEST OF THE NW COR. SEC. 11 T109N-R41W
 TO: A PT. 1175.00 FT. WEST OF THE NW COR. SEC. 11 T109N-R41W
 (Legal Description)

STATE AID PROJECT NO.: 042-599-146

GROSS LENGTH:	75.00	FEET	0.014	MILES
BRIDGES—LENGTH:		FEET		MILES
EXCEPTIONS—LENGTH:		FEET		MILES
NET LENGTH:	75.00	FEET	0.014	MILES



MINN. PROJ. NO.

GOVERNING SPECIFICATIONS

THE 2005 EDITION OF THE MINNESOTA DEPARTMENT OF TRANSPORTATION
 "STANDARD SPECIFICATION FOR CONSTRUCTION" SHALL GOVERN.

INDEX	
SHEET NO. 1	TITLE SHEET
SHEET NO. 2	ESTIMATED QUANTITIES
SHEET NO. 3	BRIDGE REMOVAL PLAN

THIS PLAN CONTAINS 3 SHEETS

DESIGN DESIGNATION

PROJ. SOIL FACTOR =

ADT (CURRENT YEAR) 2011 =

ADT (FUTURE YEAR) 2031 =

DHV (DESIGN HV. VOL.) =

D (DIRECTIONAL DRSTR.) =

T (HEAVY COMMERCIAL)

LESS THAN 150 =

DESIGN LOADING =

SHOULDER WIDTH:

OR

FUNCTIONAL CLASSIFICATION: Local

NO. OF TRAFFIC LANES: NO. OF PARKING LANES:

DESIGN SPEED:

BASED ON STOPPING SIGHT DISTANCE:

HEIGHT OF EYE: HEIGHT OF OBJECT:

DESIGN SPEED NOT ACHIEVED AT:

STA	TO STA	MPH
-----	--------	-----

Ray Van Mar

Design Engineer: I hereby certify this plan was prepared by me or under my direct supervision, and that I am a duly registered Professional Engineer under the laws of the State of Minnesota.

Date: 8/7/13 License number: 50428

Ray Van Mar

Approved: County Engineer Date: 8/7/13

STATE AID APPROVALS:

Tom D. Bennett

District State Aid Engineer: Date: 9/4/13

Reviewed for Compliance with State-Aid Rules/Poicy

Tom D. Bennett

District State Aid Engineer: Date: 9/4/13


Approved for Federal & State Aid Funding

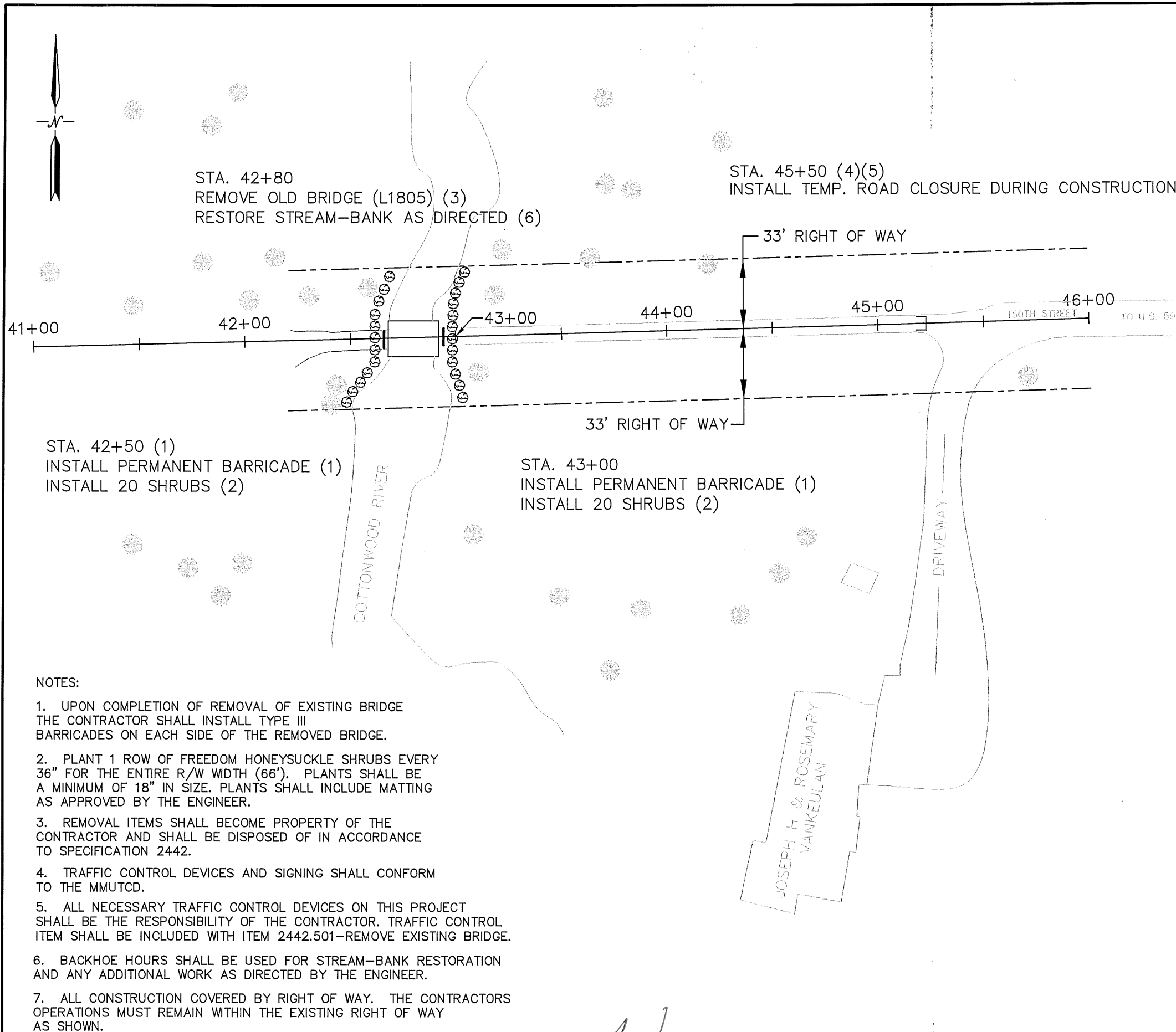
ESTIMATED QUANTITIES

NOTE	SPECIFICATIONS NUMBER	ITEM	UNIT	PARTICIPATING	NON-PARTICIPATING	TOTAL ESTIMATED QUANTITIES
	2021 . 501	MOBILIZATION	LUMP SUM	1.00		1.00
1	2101 . 511	CLEARING AND GRUBBING	LUMP SUM	1.00		1.00
2	2123 . 610	1.5 C.Y. BACKHOE	HOUR	12.00		12.00
3	2442 . 501	REMOVE EXISTING BRIDGE	LUMP SUM	1.00		1.00
4	2563 . 602	TYPE III BARRICADES	EACH	2.00		2.00
5	2564 . 602	F&I SIGN PANEL (ROAD CLOSED)	EACH	2.00		2.00
6	2571 . 505	DECIDUOUS SHRUB 18" HT SEEDLING	SHRUB	40.00		40.00
	2573 . 502	SILT FENCE-MACHINE SLICED	LIN FT	200.00		200.00
	2575 . 501	SEEDING	ACRE	0.10		0.10
7	2575 . 502	SEED MIXTURE 250	POUND	20.00		20.00
8	2575 . 523	EROSION CONTROL BLANKETS (CAT 1)	SQ YD	360.00		360.00
9	2575 . 532	COMMERCIAL FERTILIZER ANALYSIS 22-5-10	POUND	30.00		30.00

1. CLEAR AND GRUB APPROXIMATELY 10 SMALL TREES AND SHRUBS AS DIRECTED BY THE ENGINEER.
2. HOURS PROVIDED FOR STREAM BANK RESTORATION. SEE "STREAM-BANK RESTORATION" TYPICAL ON SHEET 3 FOR DETAILS.
3. REMOVAL ITEMS SHALL BECOME PROPERTY OF THE CONTRACTOR AND SHALL BE DISPOSED OF ACCORDING TO SPECIFICATION 2104.3 (C3).
4. TYPE III BARRICADE SHALL BE INSTALLED ON PERMANENT POSTS AS DIRECTED BY THE ENGINEER. ITEM SHALL INCLUDE ALL MATERIALS AND LABOR.
5. SIGN PANEL SHALL BE R11-2 (ROAD CLOSED). SIGN PANEL SHALL BE INSTALLED ON EACH TYPE III BARRICADE AS DIRECTED BY THE ENGINEER.
6. TOTAL BID PRICE SHALL INCLUDE MATTING AND INSTALLATION. INSTALL FREEDOM HONEYSUCKLE SHRUBS ON EACH END OF THE BRIDGE AS DIRECTED BY THE ENGINEER.
7. SHALL BE SOWN AT A RATE OF 200 POUNDS/ACRE.
8. INSTALL AS DIRECTED BY THE ENGINEER.
9. SPREAD AT A RATE OF 300 POUNDS/ACRE.

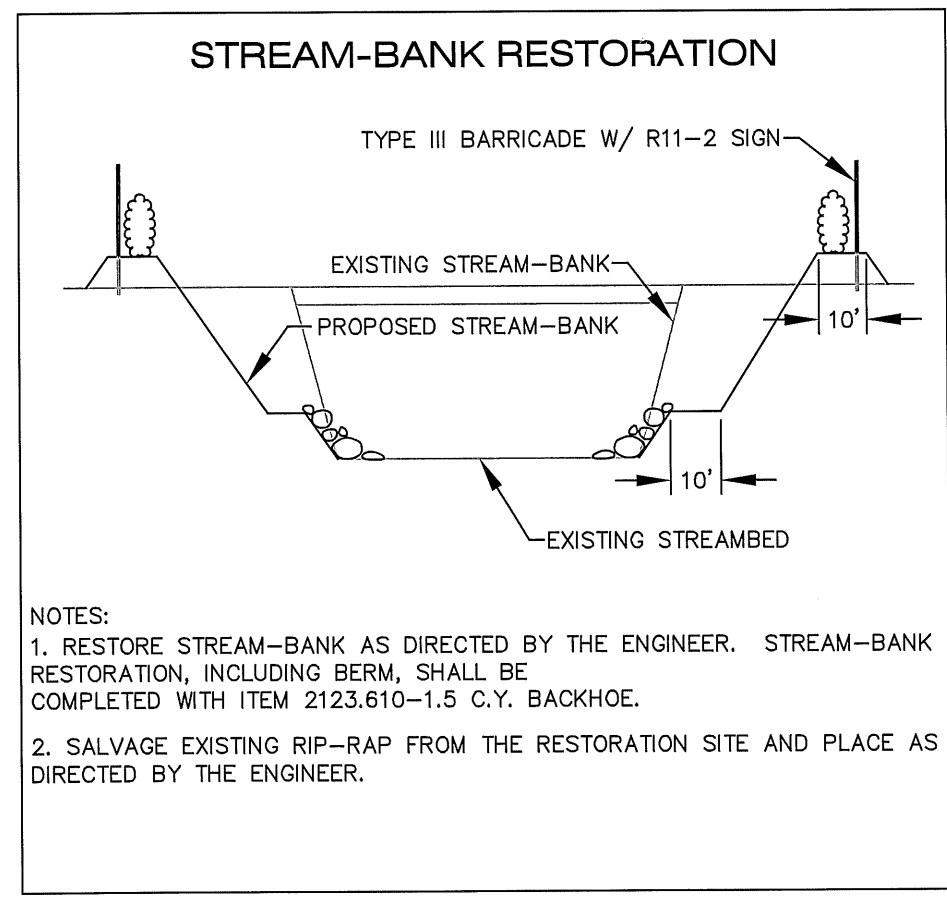
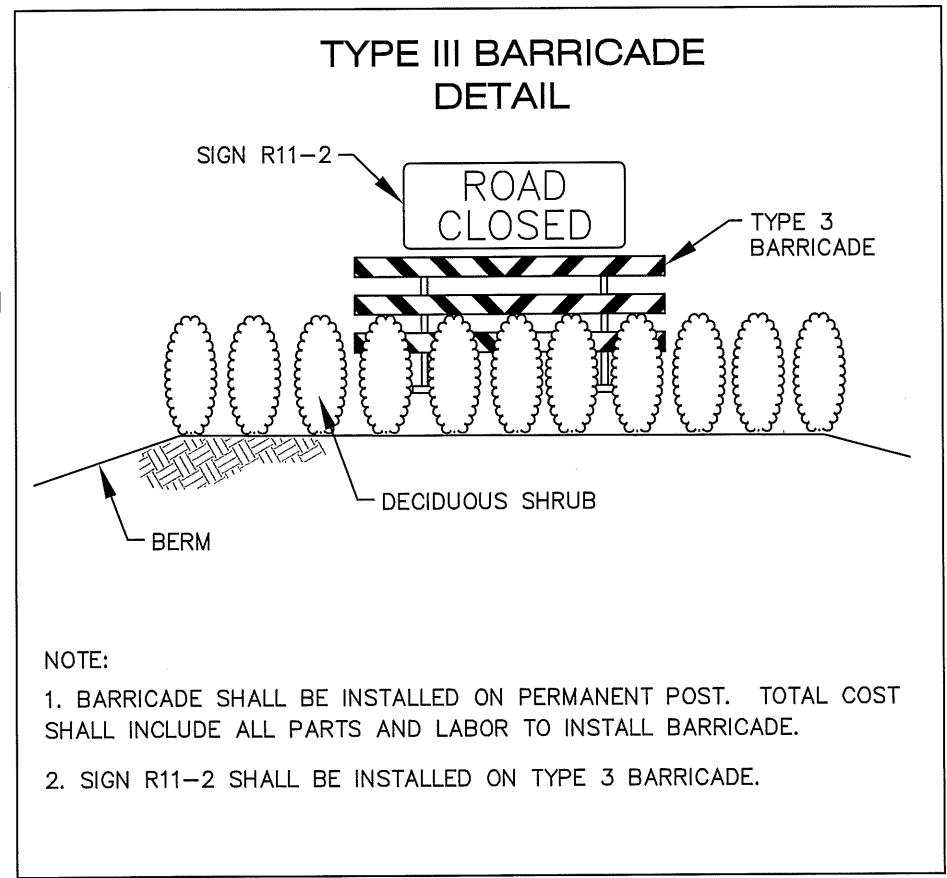
STANDARD PLATES	
THE FOLLOWING STANDARD PLATES, APPROVED BY THE FEDERAL HIGHWAY ADMINISTRATION, SHALL APPLY ON THIS PLAN.	
PLATE NO.	DESCRIPTION
8000 I	STANDARD BARRICADES

CERTIFIED BY  LIC. NO. 50428 DATE 8/7/13
 LICENSED PROFESSIONAL ENGINEER



NOTES:

- UPON COMPLETION OF REMOVAL OF EXISTING BRIDGE THE CONTRACTOR SHALL INSTALL TYPE III BARRICADES ON EACH SIDE OF THE REMOVED BRIDGE.
- PLANT 1 ROW OF FREEDOM HONEYSUCKLE SHRUBS EVERY 36" FOR THE ENTIRE R/W WIDTH (66'). PLANTS SHALL BE A MINIMUM OF 18" IN SIZE. PLANTS SHALL INCLUDE MATTING AS APPROVED BY THE ENGINEER.
- REMOVAL ITEMS SHALL BECOME PROPERTY OF THE CONTRACTOR AND SHALL BE DISPOSED OF IN ACCORDANCE TO SPECIFICATION 2442.
- TRAFFIC CONTROL DEVICES AND SIGNING SHALL CONFORM TO THE MMUTCD.
- ALL NECESSARY TRAFFIC CONTROL DEVICES ON THIS PROJECT SHALL BE THE RESPONSIBILITY OF THE CONTRACTOR. TRAFFIC CONTROL ITEM SHALL BE INCLUDED WITH ITEM 2442.501-REMOVE EXISTING BRIDGE.
- BACKHOE HOURS SHALL BE USED FOR STREAM-BANK RESTORATION AND ANY ADDITIONAL WORK AS DIRECTED BY THE ENGINEER.
- ALL CONSTRUCTION COVERED BY RIGHT OF WAY. THE CONTRACTORS OPERATIONS MUST REMAIN WITHIN THE EXISTING RIGHT OF WAY AS SHOWN.



CERTIFIED BY *[Signature]* LIC. NO. 50428 DATE 8/7/13
 LICENSED PROFESSIONAL ENGINEER

BRIDGE REMOVAL (BRIDGE L1805, CUSTER TOWNSHIP)
 STATE AID PROJECT NO. 042-599-146 SHEET 3 OF 3 SHEETS